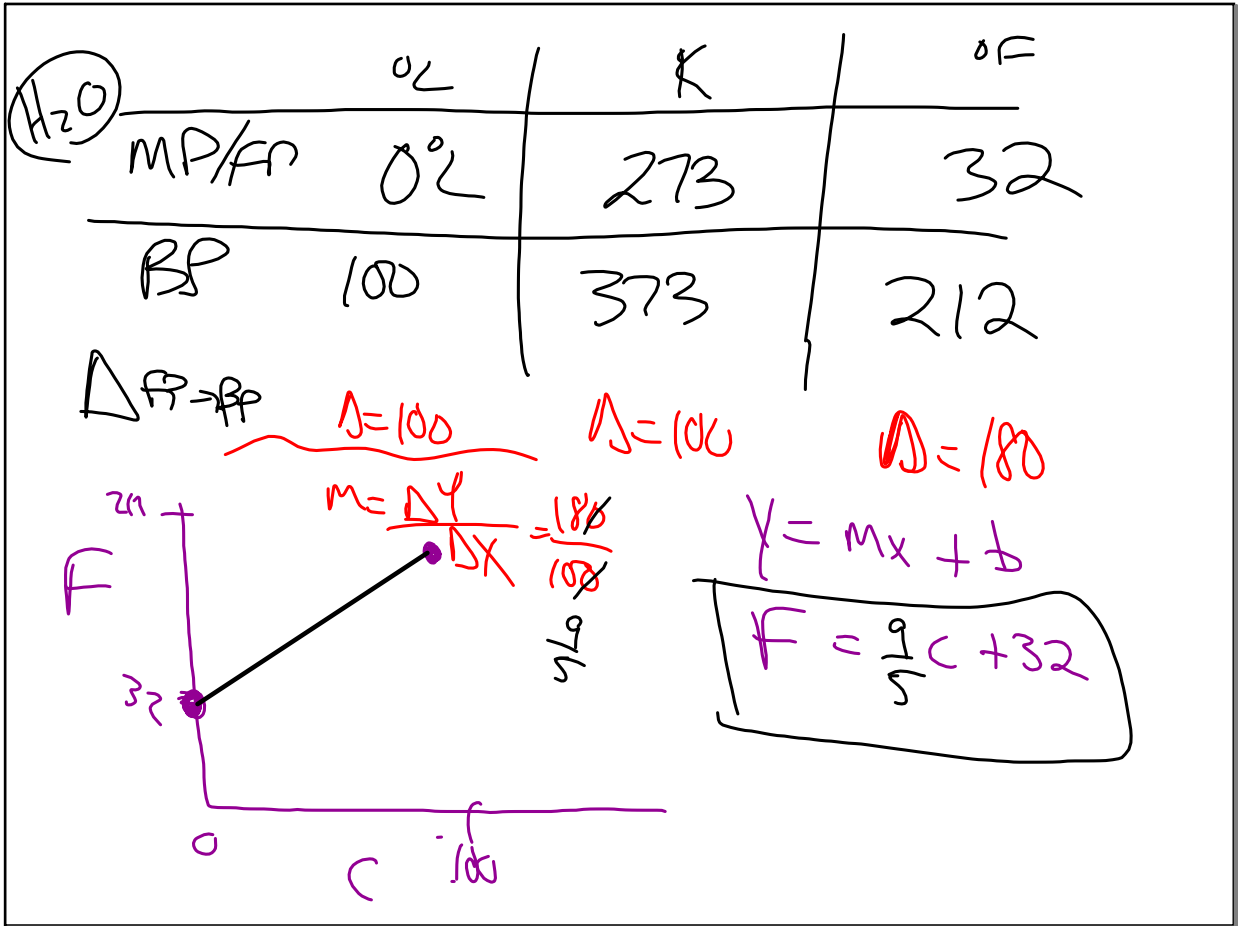


Oct 16-9:24 AM

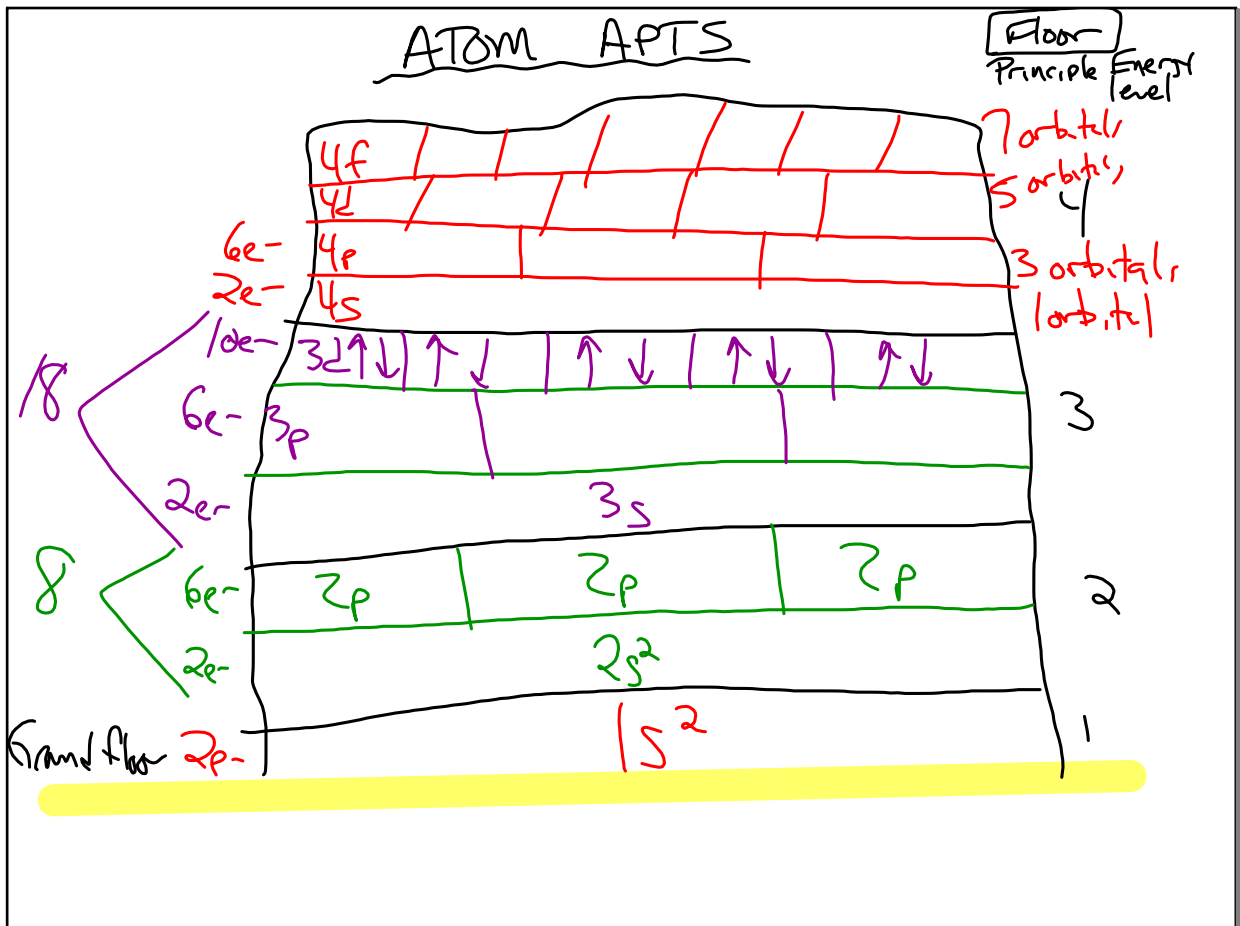
(26)  $Q = mc \Delta T$   
 $(33) = (4)(4.18) \Delta T$   
 $\Delta T = 1.97^\circ\text{C}$   
 $\approx 2$

Start  $1^\circ\text{C}$   
 $+ 2$   
 $\text{Final } T = 3^\circ\text{C}$

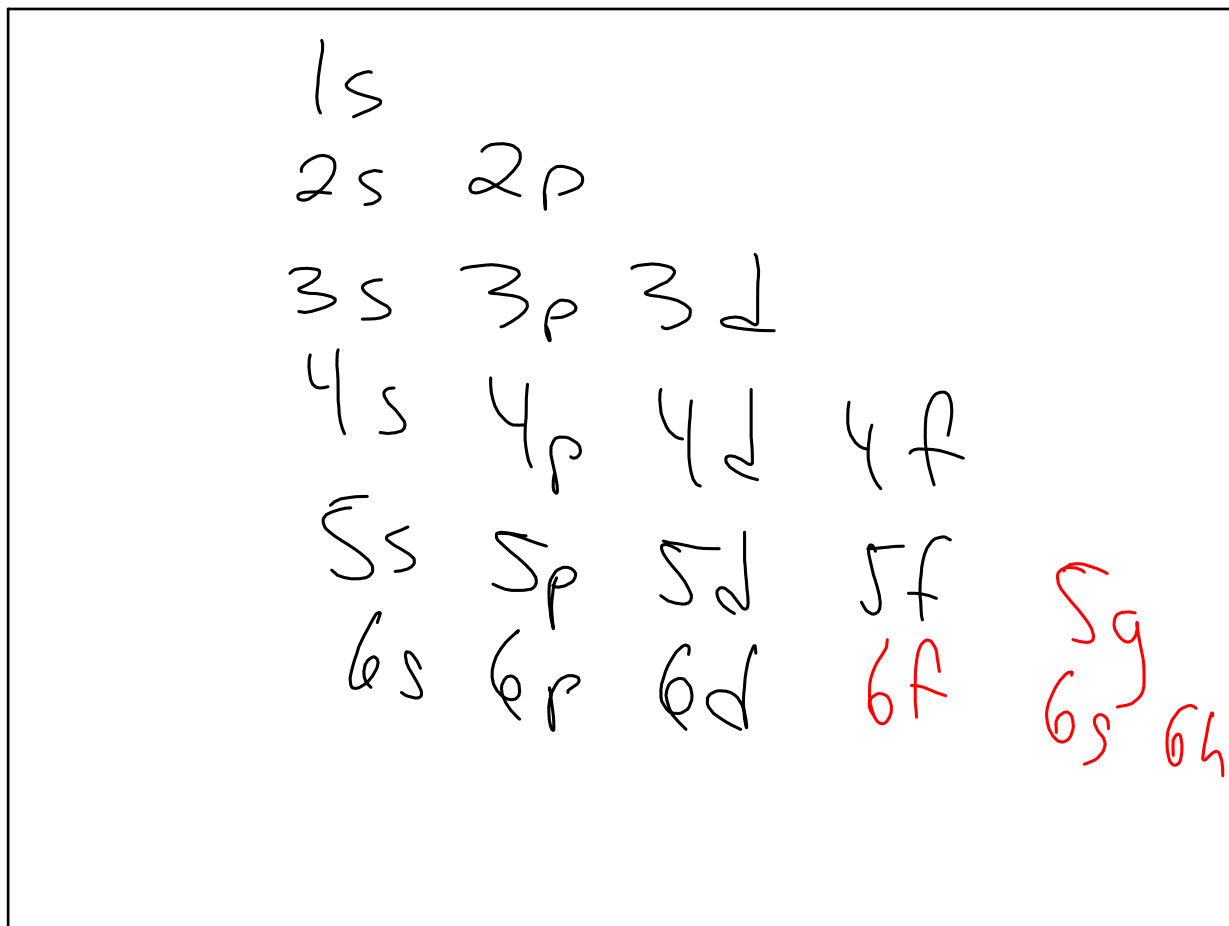
Oct 16-9:39 AM



Oct 16-9:44 AM



Oct 16-9:53 AM



Oct 16-10:02 AM