

Redi-Whip - Whipped cream
in pressurized can

NO₂ → "Whip-its"
↳ "Laughing gas"

Analgesic → Pain Reliever

Mar 27-9:36 AM

Routes of Drug Admin. ^{into bloodstream}

FAST

① IV → Intra venous injection

IO - ^{Intra osseous} Directly into blood stream ⇒ CNS!

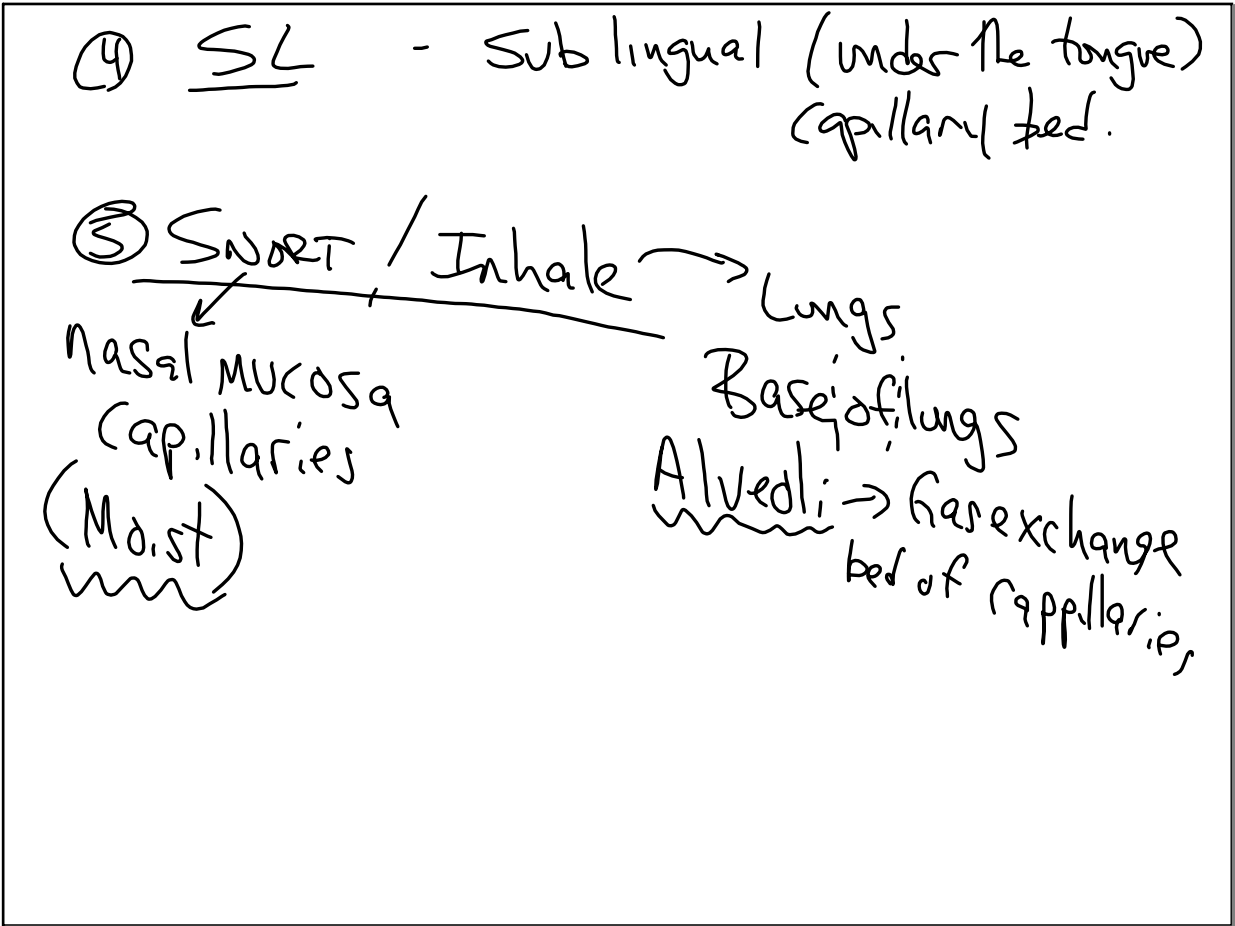
② IM → Intra Muscular → Deltoid
→ Quad
→ Glut. Max.

③ SQ → Subcutaneous
↳ just under surface of skin

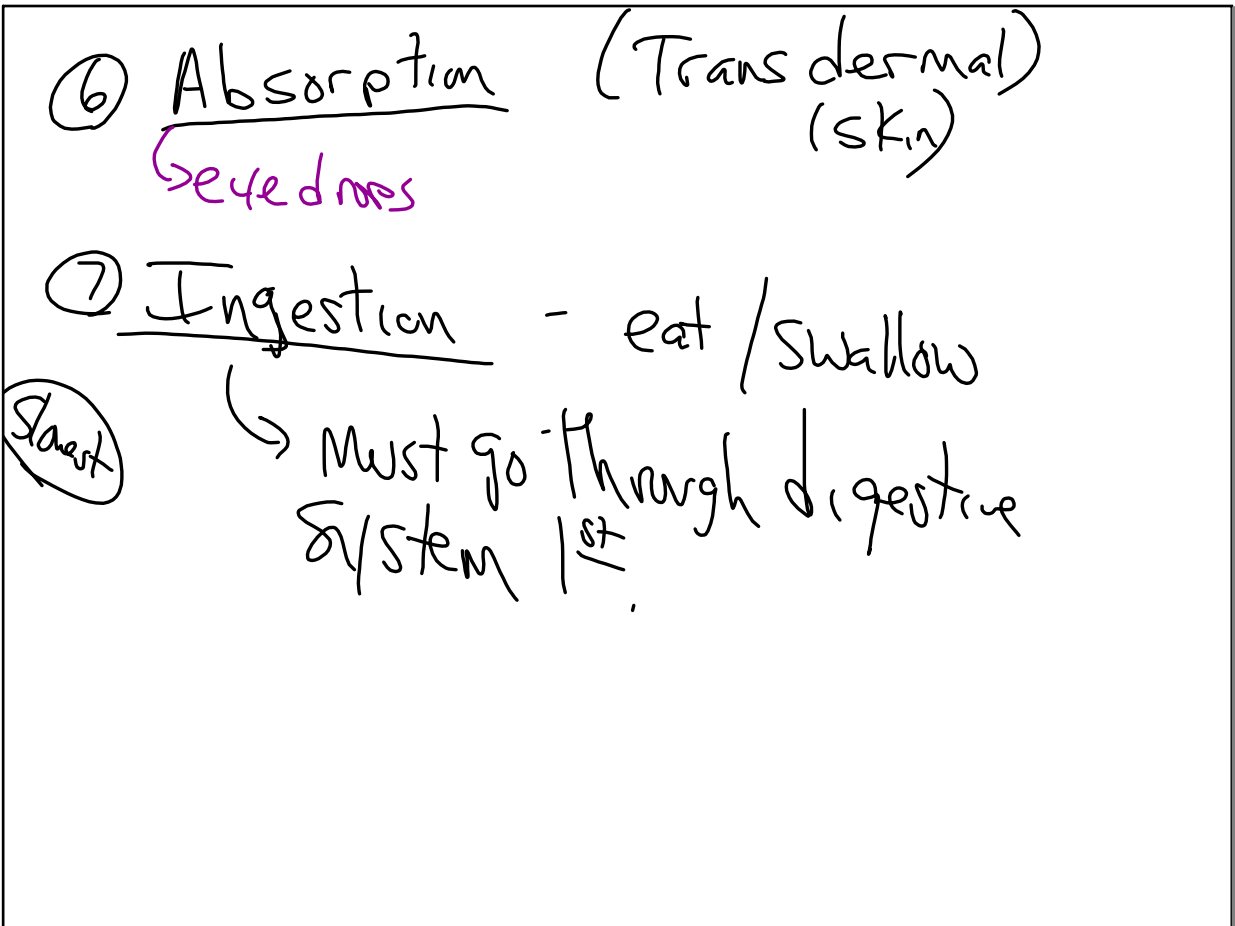
POP marks. ○ Scars.

slow

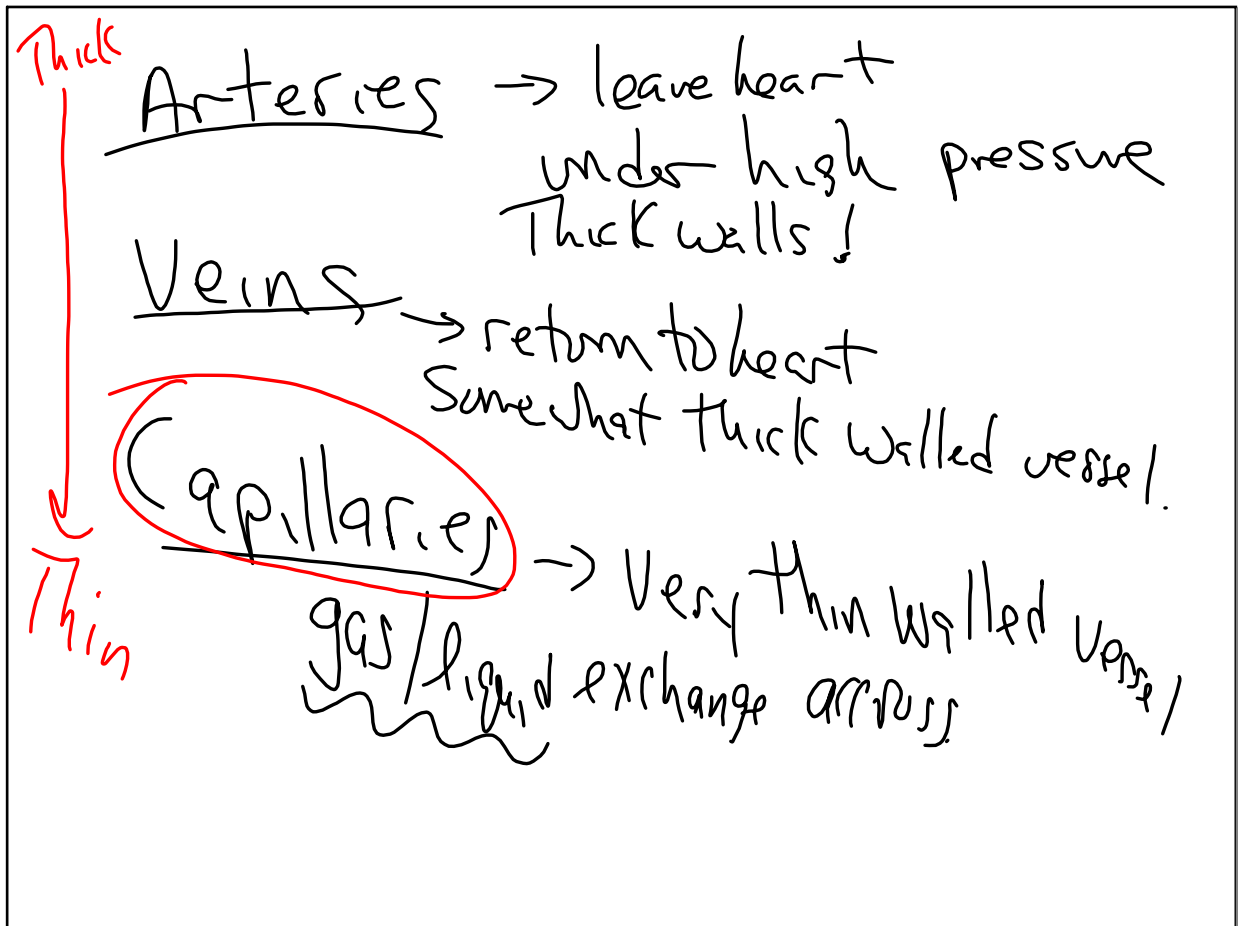
Mar 27-9:40 AM



Mar 27-9:48 AM



Mar 27-9:55 AM



Mar 27-9:59 AM

R_x weight/mass based.

mg of R_x / kg body weight.

1 kg = 2.2 pounds

Mar 27-10:02 AM