

⑥ $\ominus \Delta H$, exothermic , gives off heat

System $\xrightarrow{\text{Heat}}$ Surrounding
 COLDER

$g \rightarrow l \rightarrow s$

Oct 27-8:05 AM

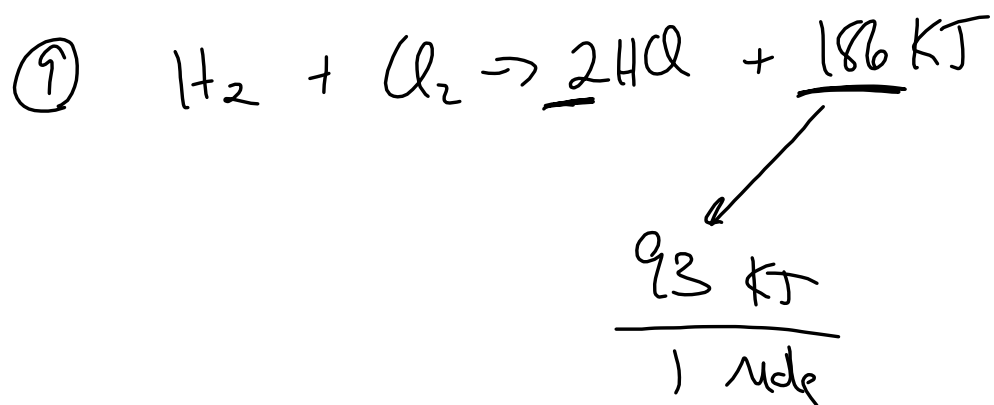


25g Na₂O₂	1mole Na₂O₂	126 KJ	20.19 KJ
	78g H ₂ O	2mole H₂O	

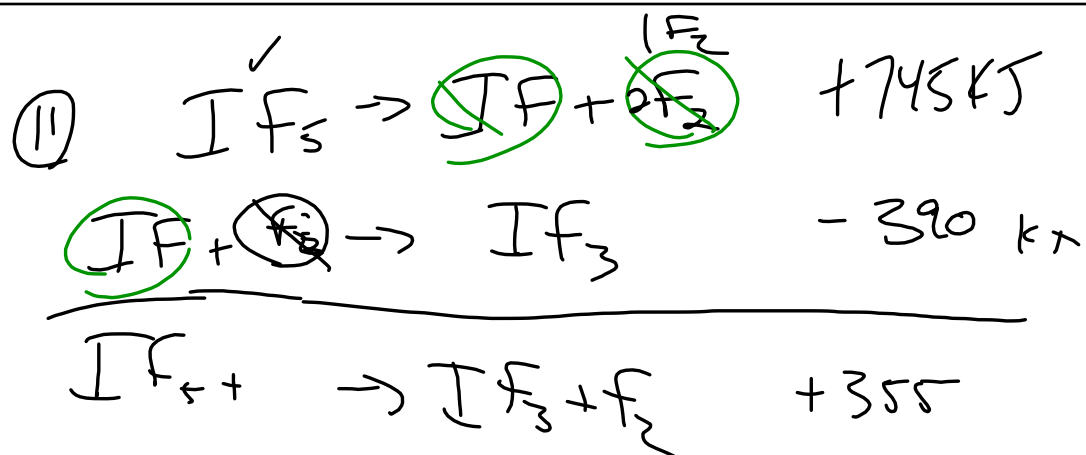
⑧

16g C₆H₆	1mole C₆H₆	6535 KJ	= 670.2 KJ (6.7) × 10 ² KJ
	78g C ₆ H ₆	2mole C₆H₆	

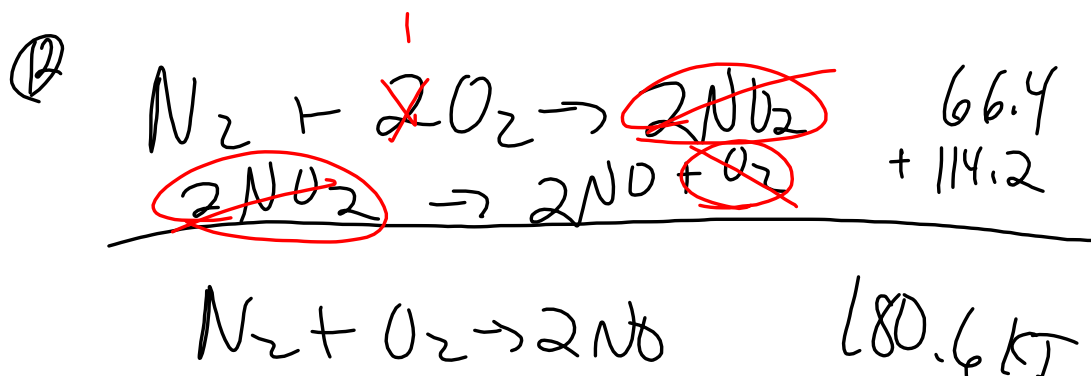
Oct 27-8:20 AM



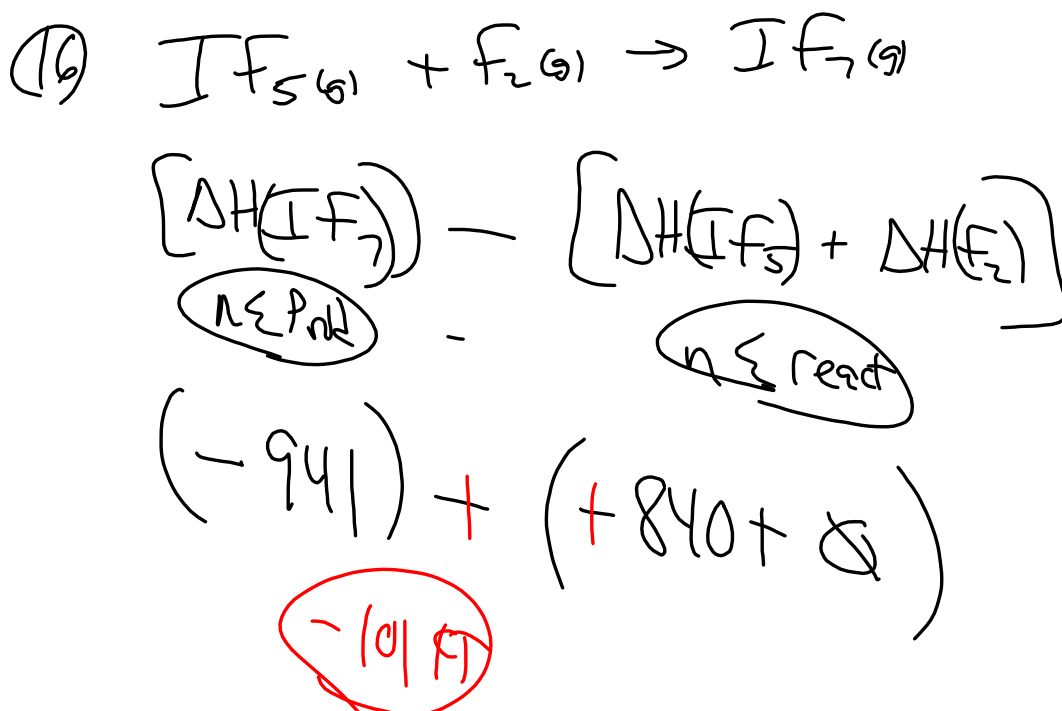
Oct 27-8:27 AM



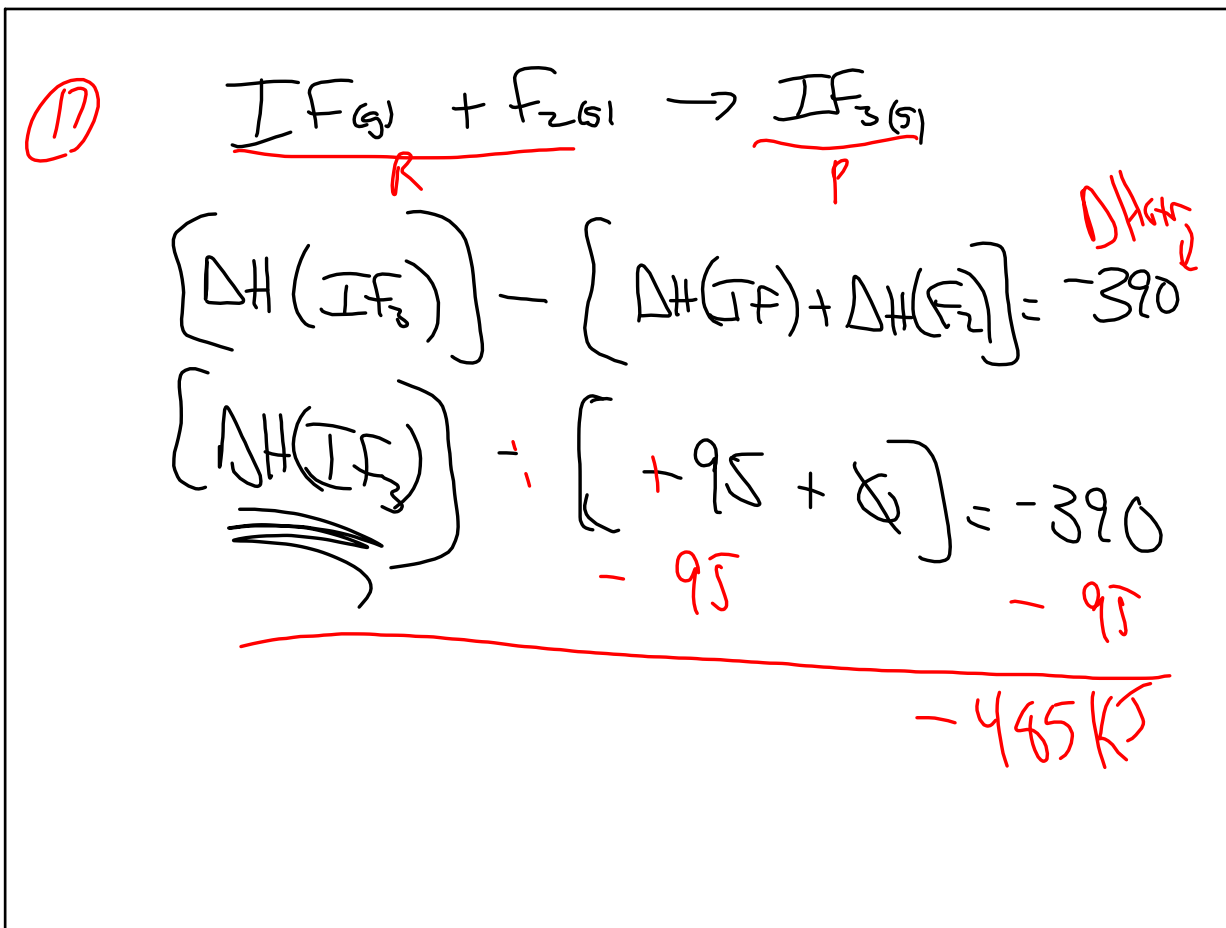
Oct 27-8:28 AM



Oct 27-8:32 AM



Oct 27-8:36 AM



Oct 27-8:39 AM

Aw ps 5-1
22, 23, 24

Heat lost \leftarrow Heat gained

$M\Delta T$ $M\Delta T$

Oct 27-8:43 AM