

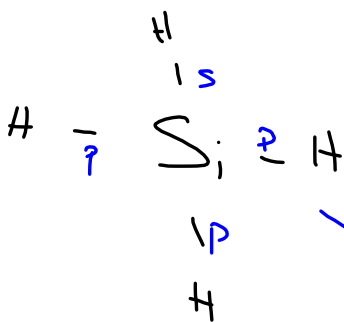
## Steps to Draw Covalent Structures

- ① Add up all valence e<sup>-</sup> (Bank)
  - ② Metal (more metallic) ↓ ← in middle
  - ③ Attach rest with single bonds (Subt e<sup>-</sup> used from Bank)
  - ④ Fix periphery (Subt # e<sup>-</sup> used)
- ⇒ ⑤ If there are extra e<sup>-</sup> → No on central atom
- ⇒ ⑥ If we still need more e<sup>-</sup> → Try double/triple bonds

Dec 3-8:04 AM



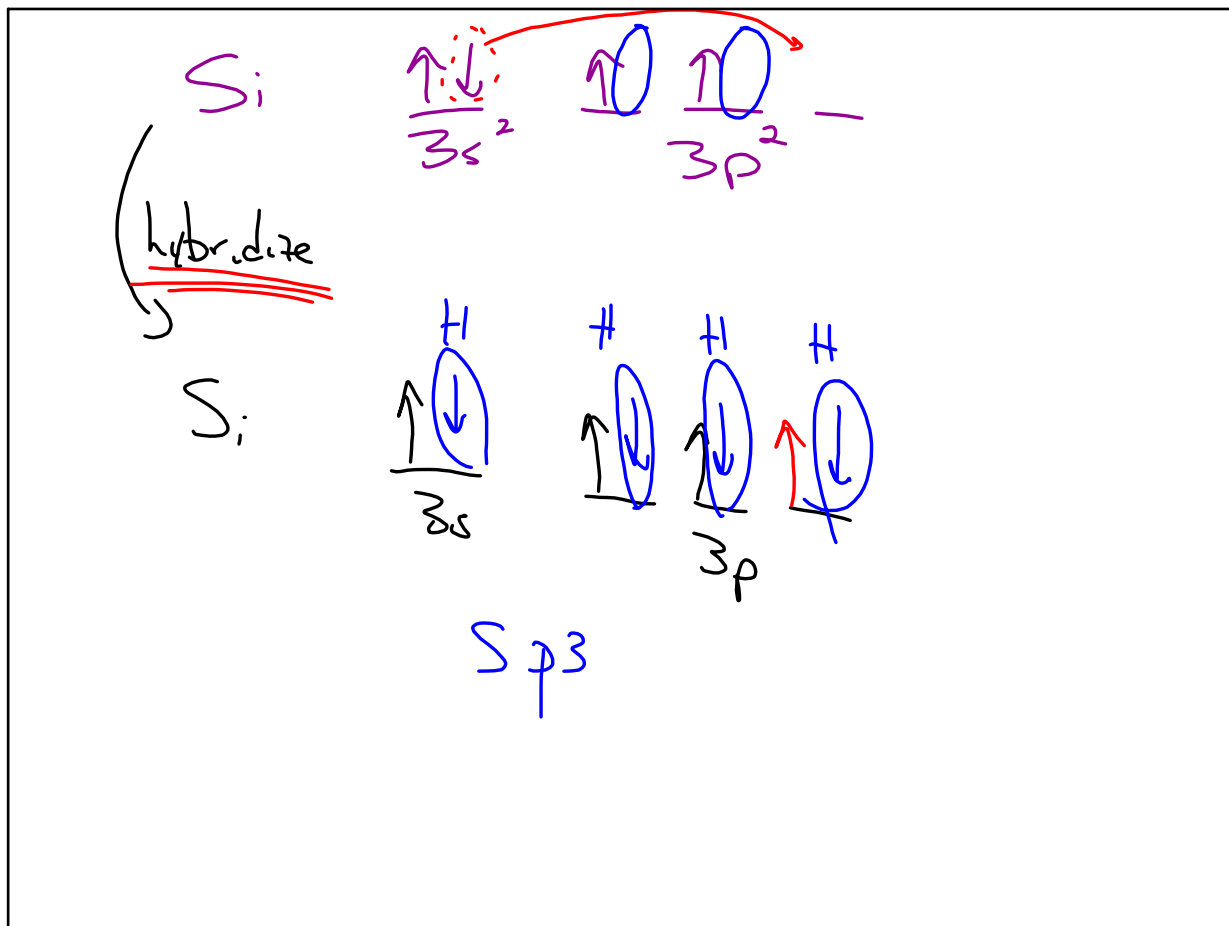
$$1(4) + 4(1) = 8 - 8 = 0$$



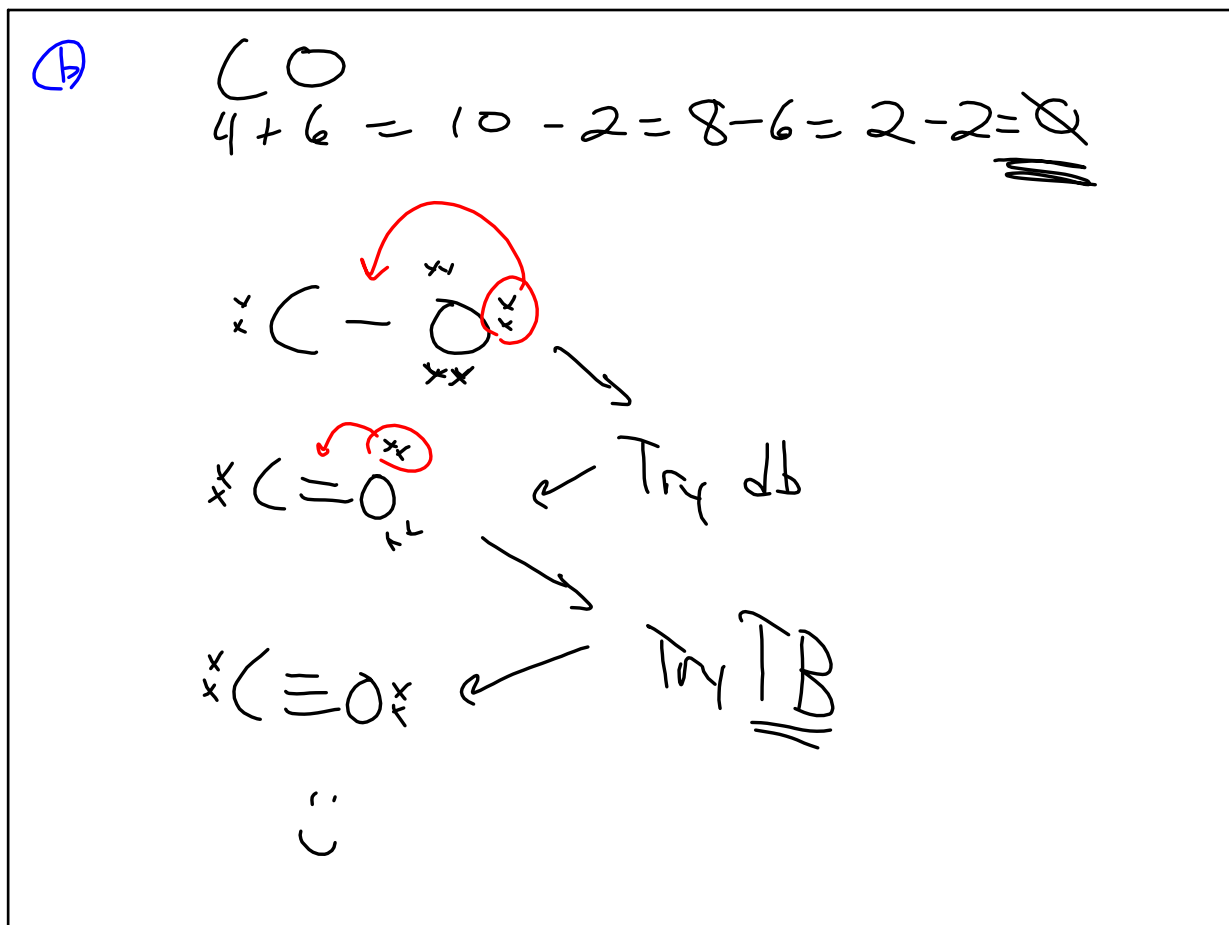
(Si) → 4 bond sites  
 0 non-bond sites  
 (lone pairs of e<sup>-</sup>)

Tetrahedral  
 sp<sup>3</sup> hybrid  
 p<sub>3</sub> + s<sub>1</sub>

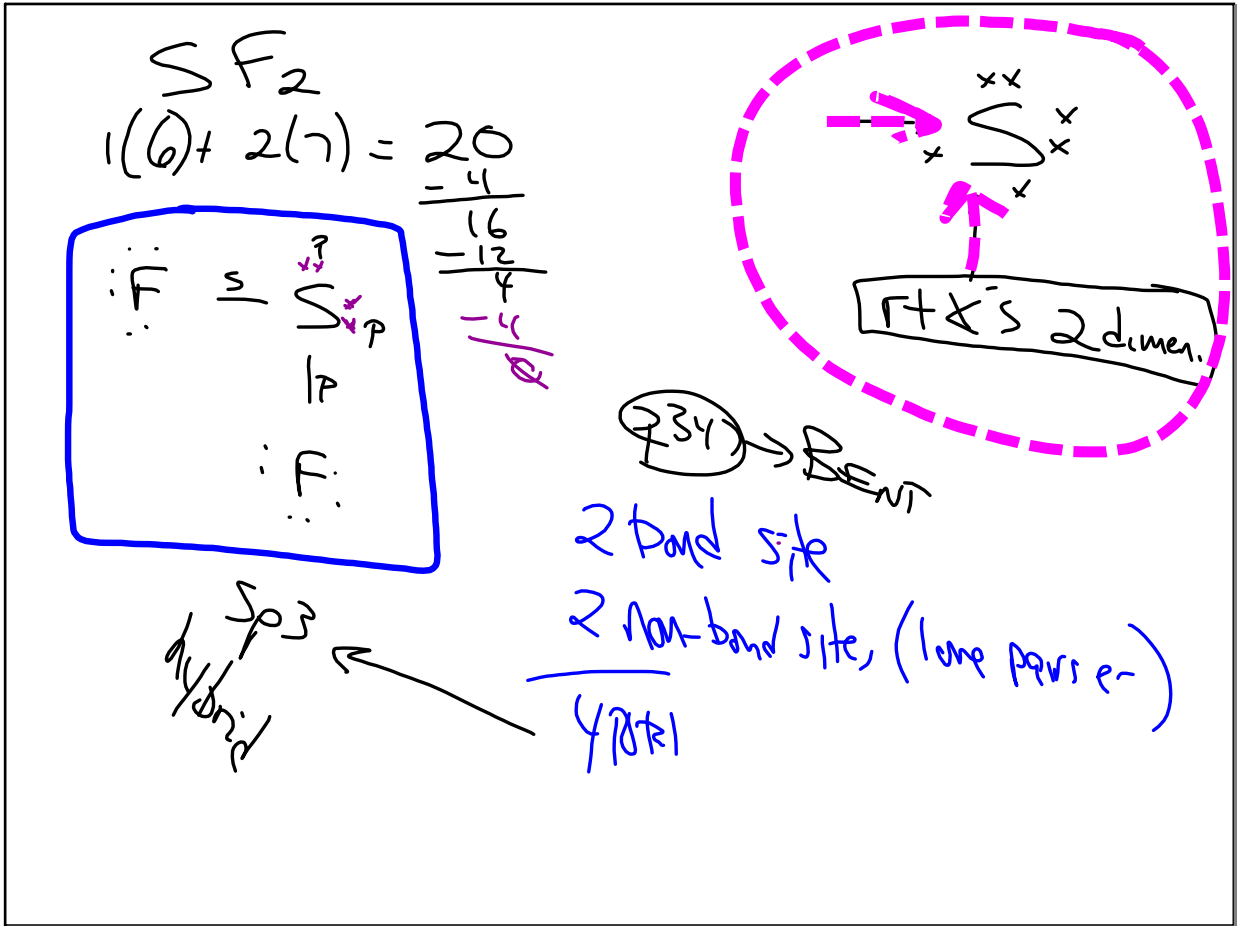
Dec 3-8:17 AM



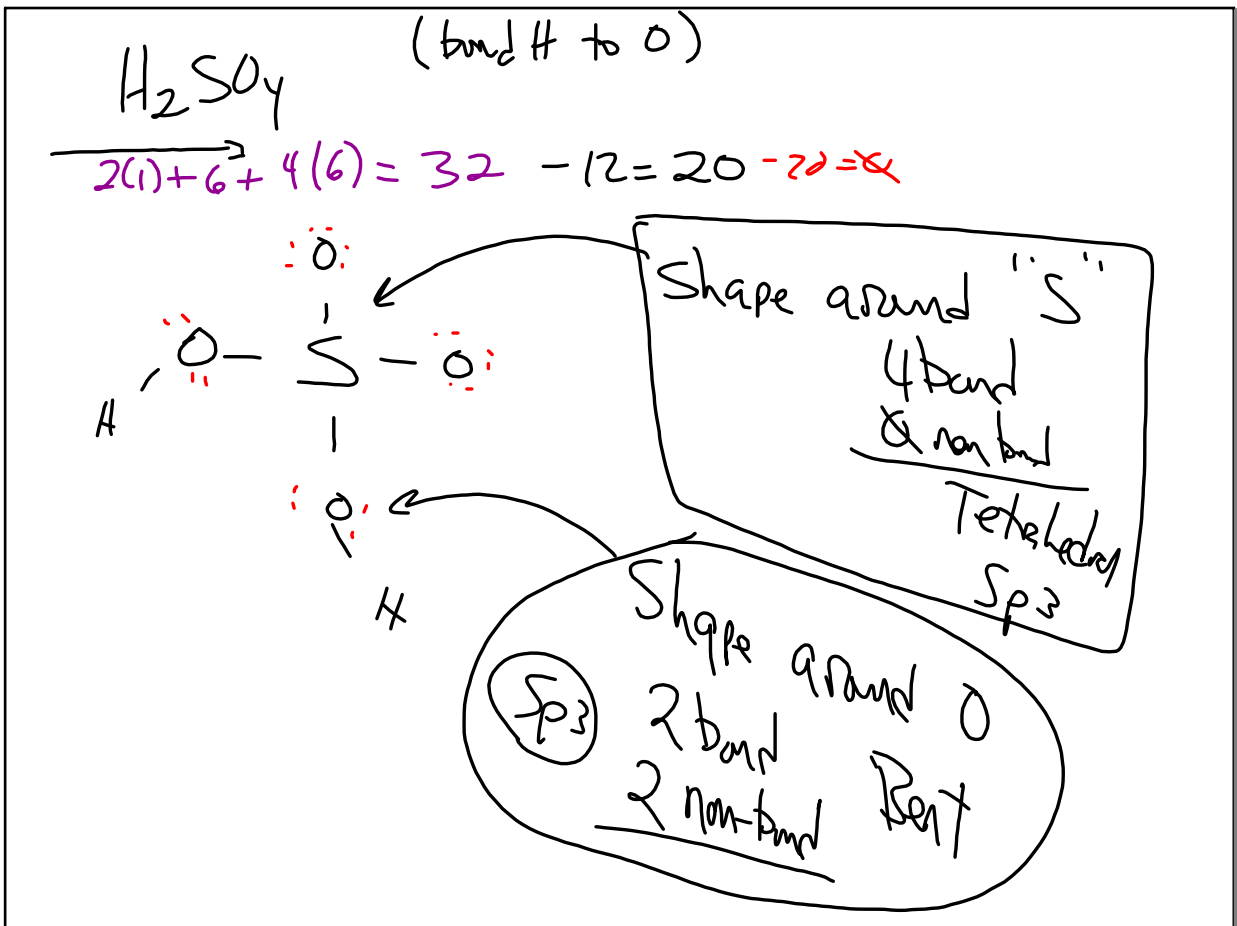
Dec 3-8:24 AM



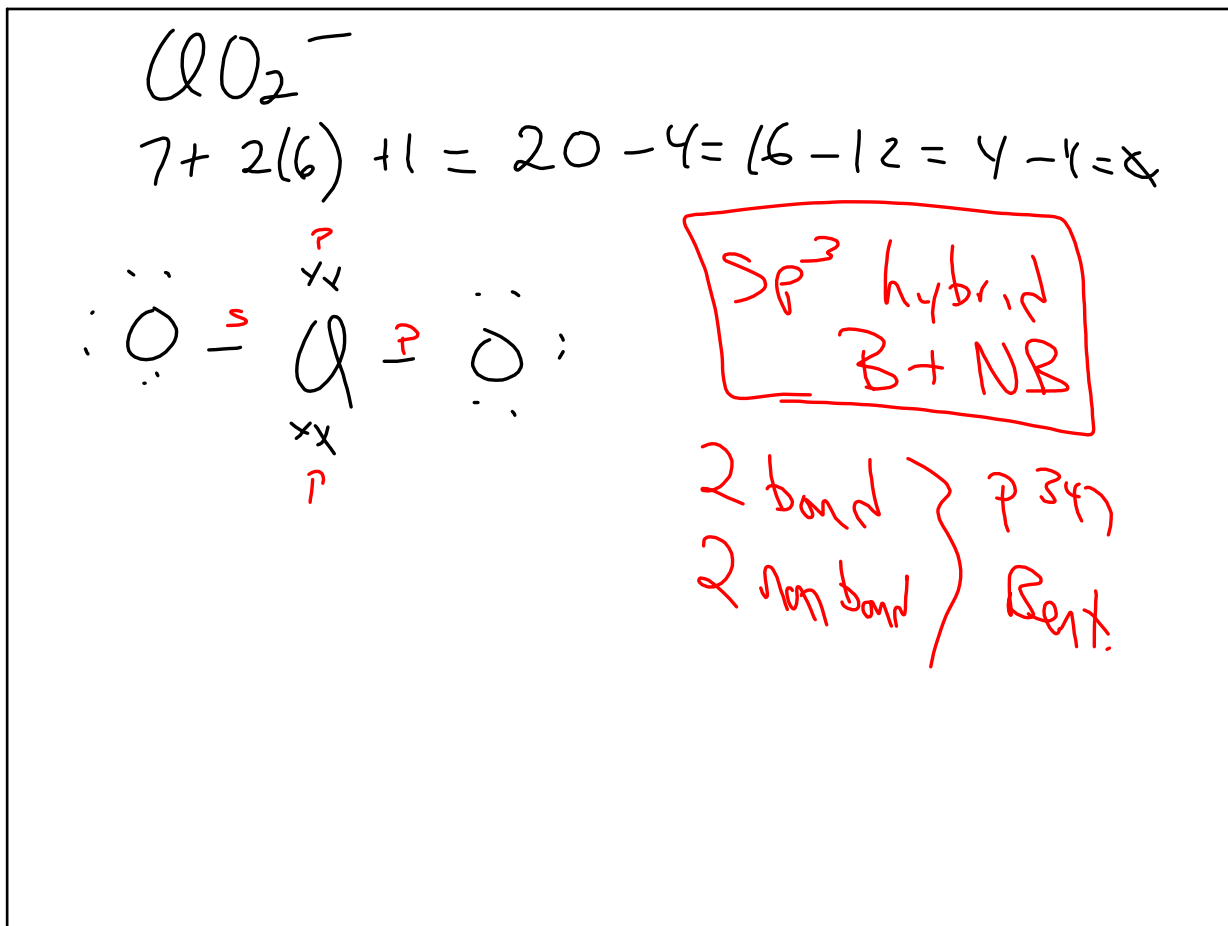
Dec 3-8:26 AM



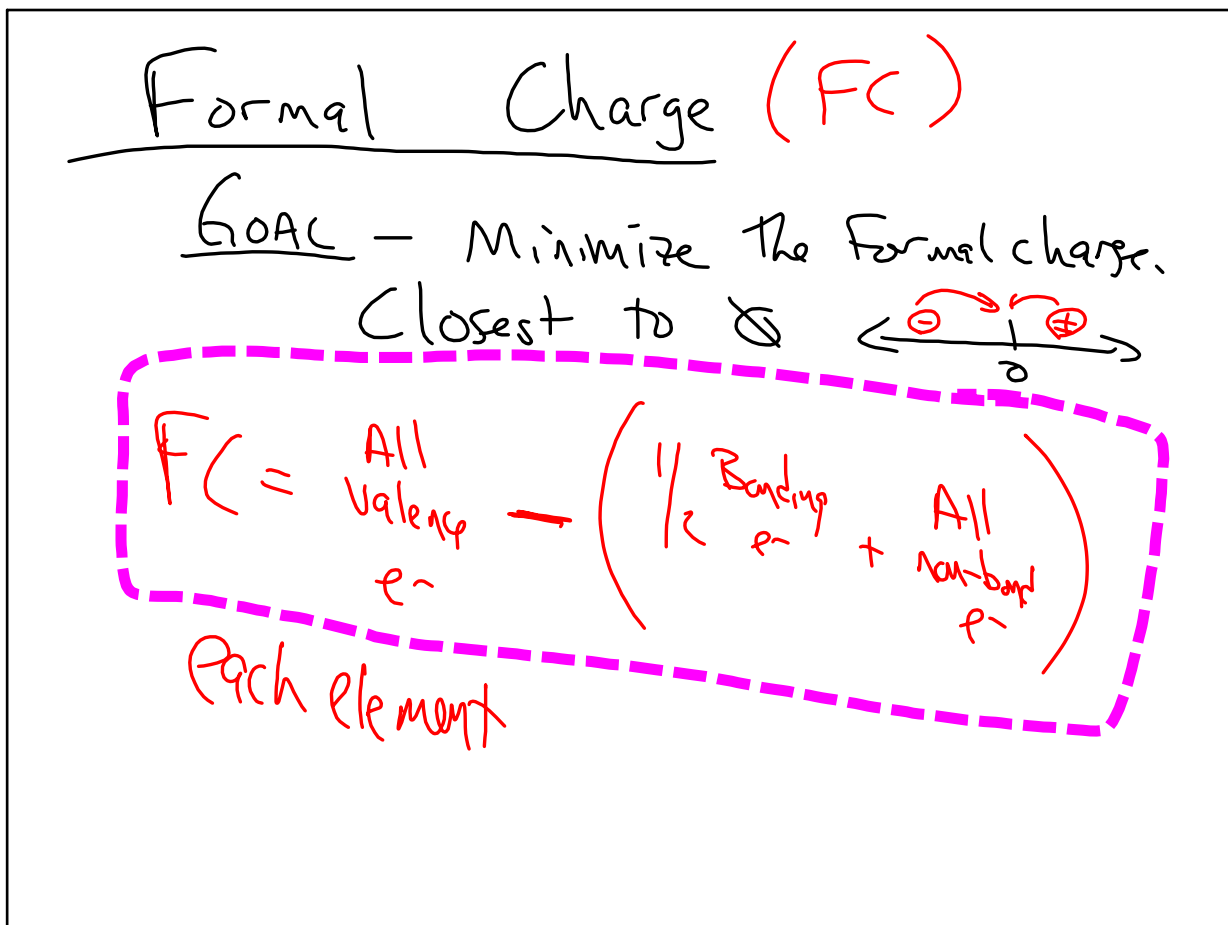
Dec 3-8:29 AM



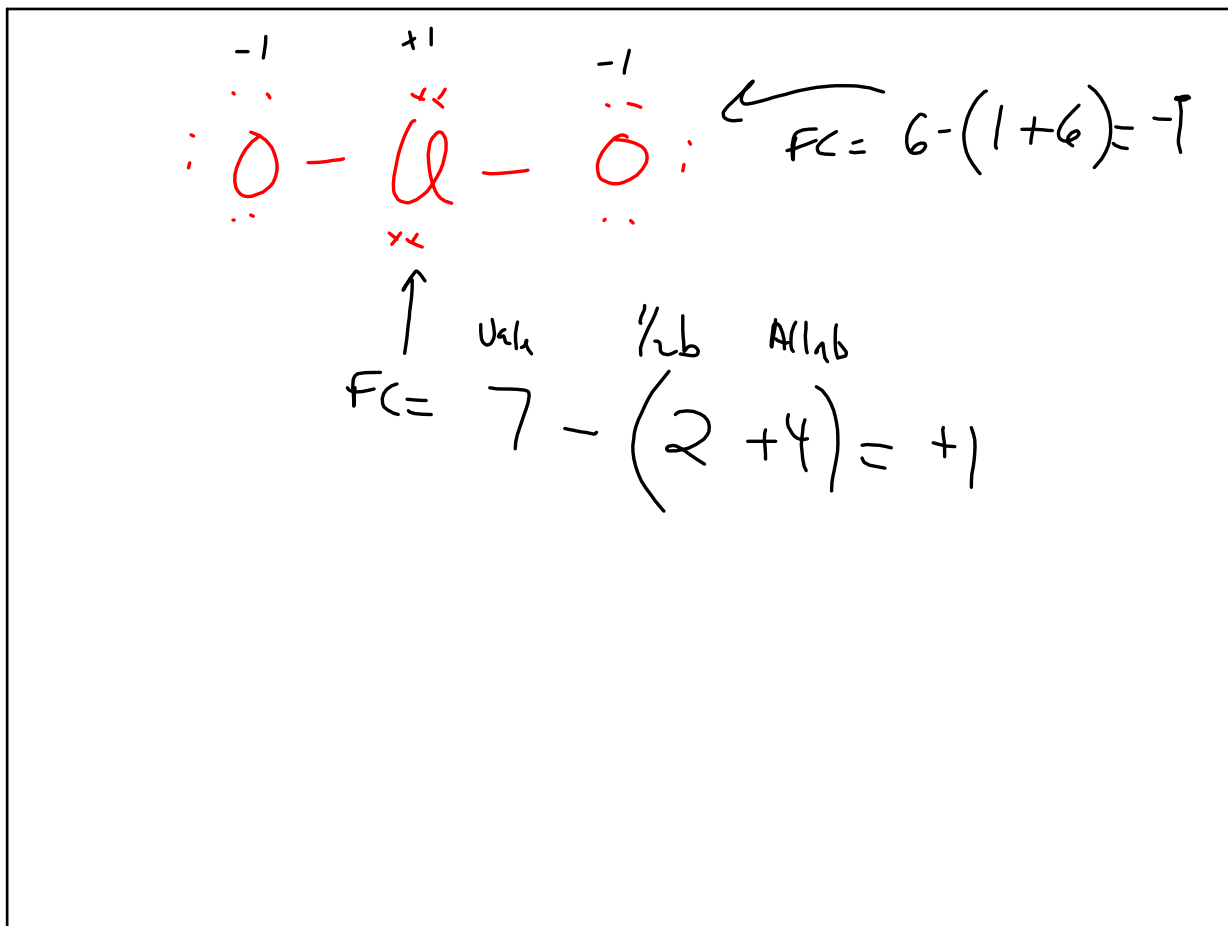
Dec 3-8:34 AM



Dec 3-8:38 AM



Dec 3-8:41 AM



Dec 3-8:43 AM

- 8/46 a-d.
- ⊗ include hybridization around central atom
  - ⊗ Shape  $\rightarrow 347 + 358$  bond order  
non bond order
  - ⊗ formal charge on each element.

Dec 3-8:45 AM